



VENDOR

Sean Lyons

Ardroon Ruan Co Clare

Lot 1 Ruan Finola

ID: IE131059130510

Breed: Limousin

Sex: Female

DOB: 12-Sep-2010

Owner: Sean Lyons - Ardron Ruan Co Clare

Breeder:

Sire: Roundhill Botan 983 (Et)
RBU

Otan

Insecte

Jade

Roundhill Sorcha Et

Geant

Dalida

Dam: Ruan Collette
IE131059130428

Honeylodge
Admiral

Ronick Hawk

Aheybridge Joan

Ruan Kathy

Grange Balerno

Moneypoint Hilda

Star Rating (Within Limousin breed)	Economic Indexes	€uro value per progeny	Index Reliability	Star rating (across all beef breeds)
★	Maternal	€58	32% (Low)	★★
☆	Terminal	€55	37% (Low)	★★
	Dairy Beef			

Star Rating (Within Limousin breed)	Key profit traits	Index Value	Trait Reliability	Star rating (across all beef breeds)
---	-------------------	----------------	----------------------	--

Expected progeny performance

☆	Calving difficulty (% 3 & 4) Breed ave: 5.33%,All breeds ave: 5.49%	+10.12%	41% (Average)	☆
★★★★☆	Docility (1-5 scale) Breed ave: -0.06,All breeds ave: 0	-0.03 scale	46% (Average)	★★★☆☆
★★★☆☆	Carcass weight (kg) Breed ave: 18.61kg,All breeds ave: 18.25kg	+18.2kg	39% (Low)	★★★☆☆
☆	Carcass conformation (1-15 scale) Breed ave: 1.79,All breeds ave: 1.57	+1.55 scale	34% (Low)	★★★☆☆

Expected daughter breeding performance

★★★★★☆☆	Daughter calving diff (% 3 & 4) Breed ave: 5.9%,All breeds ave: 6.36%	+4.94%	27% (Low)	★★★★★☆☆
★★★★★☆☆	Daughter Milk (kg) Breed ave: -0.31kg,All breeds ave: 0.47kg	+4.9kg	21% (Low)	★★★★★☆☆
★★★☆☆	Daughter calving interval (days) Breed ave: 1.27days,All breeds ave: -0.2days	+1.19days	21% (Low)	★★★☆☆

Additional Information:

Linear composites	Value	Reliability
Muscle	105	54%
Skeletal	109	53%
Function	95	26%

Herd data quality index

N/A

Animal scored. Linear scores and weaning weights in evaluations

Lot 2 Ruan Fidelma

ID: IE131059140511

Breed: Limousin

Sex: Female

DOB: 12-Sep-2010

Owner: Sean Lyons - Ardron Ruan Co Clare

Breeder:

Sire: Honeylodge Admiral
IE121254470155

Ronick Hawk

Broadmeadows Cannon

Ronick Esther

Aheybridge Joan

Brownhill Harry

Poulnasherry Eimear

Dam: Drumnagoon Peck
IE171022360065

Drumnagoon
Launcelot

Ulex

Napolitaine

Drumnagoon
Kuddles

Drumeel Hector Et

Drumnagoon Goldie

Star Rating (Within Limousin breed)	Economic Indexes	€uro value per progeny	Index Reliability	Star rating (across all beef breeds)
★★★	Maternal	€70	31% (Low)	★★★
★	Terminal	€68	35% (Low)	★★★
	Dairy Beef			

Star Rating (Within Limousin breed)	Key profit traits	Index Value	Trait Reliability	Star rating (across all beef breeds)
Expected progeny performance				
★★★	Calving difficulty (% 3 & 4) Breed ave: 5.33%,All breeds ave: 5.49%	+5.91%	42% (Average)	★★★
★	Docility (1-5 scale) Breed ave: -0.06,All breeds ave: 0	-0.17 scale	45% (Average)	★
★★★	Carcass weight (kg) Breed ave: 18.61kg,All breeds ave: 18.25kg	+15.4kg	37% (Low)	★★★
★★★	Carcass conformation (1-15 scale) Breed ave: 1.79,All breeds ave: 1.57	+1.69 scale	31% (Low)	★★★★★

Expected daughter breeding performance				
★★★★★	Daughter calving diff (% 3 & 4) Breed ave: 5.9%,All breeds ave: 6.36%	+6.07%	29% (Low)	★★★★★
★★★★★	Daughter Milk (kg) Breed ave: -0.31kg,All breeds ave: 0.47kg	+2.5kg	24% (Low)	★★★★★
★★★★★	Daughter calving interval (days) Breed ave: 1.27days,All breeds ave: -0.2days	+1.06days	22% (Low)	★★★★★

Additional Information:

Linear composites	Value	Reliability
Muscle	104	54%
Skeletal	110	53%
Function	110	23%

Herd data quality index

N/A

Animal scored. Linear scores and weaning weights in evaluations

Lot 3 Ruan Frances

ID: IE131059150512

Breed: Limousin

Sex: Female

DOB: 14-Sep-2010

Owner: Sean Lyons - Ardron Ruan Co Clare

Breeder:

Sire: Honeylodge Admiral
IE121254470155

Ronick Hawk

Broadmeadows Cannon

Ronick Esther

Aheybridge Joan

Brownhill Harry

Poulnasherry Eimear

Dam: Ruan Bea
IE131059160414

Shire Milton

Ronick Gains

Colombe

Ruan Pattie

Espoir

Pelletstown Indigo

Star Rating (Within Limousin breed)	Economic Indexes	€uro value per progeny	Index Reliability	Star rating (across all beef breeds)
★★★★★	Maternal	€122	30% (Low)	★★★★★
★★★★☆	Terminal	€94	34% (Low)	★★★★★
	Dairy Beef			

Star Rating (Within Limousin breed)	Key profit traits	Index Value	Trait Reliability	Star rating (across all beef breeds)
Expected progeny performance				
★★★★	Calving difficulty (% 3 & 4) Breed ave: 5.33%,All breeds ave: 5.49%	+5.3%	41% (Average)	★★★
★★	Docility (1-5 scale) Breed ave: -0.06,All breeds ave: 0	-0.1 scale	45% (Average)	★
★★★★☆	Carcass weight (kg) Breed ave: 18.61kg,All breeds ave: 18.25kg	+20.2kg	35% (Low)	★★★
★★★★	Carcass conformation (1-15 scale) Breed ave: 1.79,All breeds ave: 1.57	+1.8 scale	29% (Low)	★★★★★

Expected daughter breeding performance				
★	Daughter calving diff (% 3 & 4) Breed ave: 5.9%,All breeds ave: 6.36%	+6.63%	28% (Low)	★★★☆☆
★★★★★★	Daughter Milk (kg) Breed ave: -0.31kg,All breeds ave: 0.47kg	+3.9kg	22% (Low)	★★★★★☆☆
★★★☆☆	Daughter calving interval (days) Breed ave: 1.27days,All breeds ave: -0.2days	+1.33days	21% (Low)	★★★☆☆

Additional Information:

Linear composites	Value	Reliability
Muscle	115	53%
Skeletal	107	53%
Function	107	24%

Herd data quality index

N/A

Animal scored. Linear scores and weaning weights in evaluations

Lot 4 Ruan Flurry

ID: IE131059180515

Breed: Limousin

Sex: Female

DOB: 21-Sep-2010

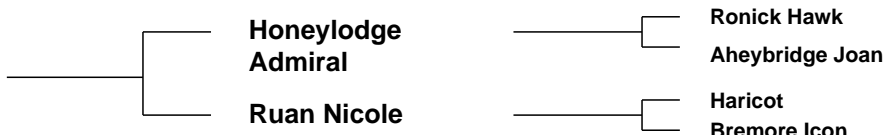
Owner: Sean Lyons - Ardron Ruan Co Clare

Breeder:

Sire: Espoir
ESP



Dam: Ruan Cora
IE131059170423



Star Rating (Within Limousin breed)	Economic Indexes	€uro value per progeny	Index Reliability	Star rating (across all beef breeds)
★	Maternal	€20	36% (Low)	★
★	Terminal	€60	38% (Low)	★★
	Dairy Beef			

Star Rating (Within Limousin breed)	Key profit traits	Index Value	Trait Reliability	Star rating (across all beef breeds)
Expected progeny performance				
★	Calving difficulty (% 3 & 4) Breed ave: 5.33%,All breeds ave: 5.49%	+7.46%	42% (Average)	★★★
★★★	Docility (1-5 scale) Breed ave: -0.06,All breeds ave: 0	-0.09 scale	47% (Average)	★★★
★	Carcass weight (kg) Breed ave: 18.61kg,All breeds ave: 18.25kg	+11kg	39% (Low)	★★★
★★★★★	Carcass conformation (1-15 scale) Breed ave: 1.79,All breeds ave: 1.57	+1.83 scale	34% (Low)	★★★★★

Expected daughter breeding performance				
★★★★★★	Daughter calving diff (% 3 & 4) Breed ave: 5.9%,All breeds ave: 6.36%	+4.78%	34% (Low)	★★★★★★
★★★★★	Daughter Milk (kg) Breed ave: -0.31kg,All breeds ave: 0.47kg	+0.9kg	33% (Low)	★★★★★
★	Daughter calving interval (days) Breed ave: 1.27days,All breeds ave: -0.2days	+4.22days	30% (Low)	★

Additional Information:

Linear composites	Value	Reliability
Muscle	104	54%
Skeletal	88	54%
Function	104	28%

Herd data quality index

N/A

Animal scored. Linear scores and weaning weights in evaluations

Lot 5 Ruan Flip

ID: IE131059190516

Breed: Limousin

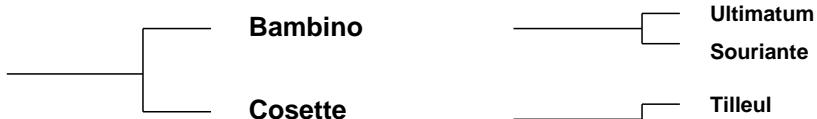
Sex: Female

DOB: 06-Oct-2010

Owner: Sean Lyons - Ardron Ruan Co Clare

Breeder:

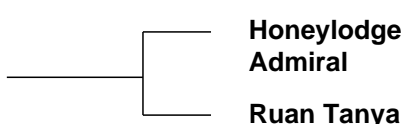
Sire: Mas Du Clo
MUC



Ultimum
Souriante

Tilleul
Lancette

Dam: Ruan Cindy
IE131059160439



Ronick Hawk
Aheybridge Joan

Ardlea Moss
Ruan Majella

Star Rating (Within Limousin breed)	Economic Indexes	€uro value per progeny	Index Reliability	Star rating (across all beef breeds)
★★★	Maternal	€74	36% (Low)	★★★☆☆
★★☆	Terminal	€79	38% (Low)	★★★☆☆
	Dairy Beef			

Star Rating (Within Limousin breed)	Key profit traits	Index Value	Trait Reliability	Star rating (across all beef breeds)
Expected progeny performance				
★	Calving difficulty (% 3 & 4) Breed ave: 5.33%,All breeds ave: 5.49%	+8.49%	42% (Average)	★
★★★★★☆☆	Docility (1-5 scale) Breed ave: -0.06,All breeds ave: 0	0.03 scale	47% (Average)	★★★★★☆☆
★★★★★	Carcass weight (kg) Breed ave: 18.61kg,All breeds ave: 18.25kg	+21.5kg	39% (Low)	★★★★★☆☆
★★★★★☆☆	Carcass conformation (1-15 scale) Breed ave: 1.79,All breeds ave: 1.57	+2.02 scale	34% (Low)	★★★★★☆☆

Expected daughter breeding performance				
★★★★★☆☆	Daughter calving diff (% 3 & 4) Breed ave: 5.9%,All breeds ave: 6.36%	+5.56%	34% (Low)	★★★★★☆☆
★★★★★	Daughter Milk (kg) Breed ave: -0.31kg,All breeds ave: 0.47kg	+1.8kg	32% (Low)	★★★★★
★	Daughter calving interval (days) Breed ave: 1.27days,All breeds ave: -0.2days	+3.69days	30% (Low)	★

Additional Information:

Linear composites	Value	Reliability
Muscle	125	54%
Skeletal	113	53%
Function	126	31%

Herd data quality index

N/A

Animal scored. Linear scores and weaning weights in evaluations

Lot 6 Ruan Fleur

ID: IE131059110517

Breed: Limousin

Sex: Female

DOB: 16-Oct-2010

Owner: Sean Lyons - Ardron Ruan Co Clare

Breeder:

Sire: Honeylodge Admiral
IE121254470155

Ronick Hawk

Broadmeadows Cannon

Ronick Esther

Aheybridge Joan

Brownhill Harry

Poulnasherry Eimear

Dam: Ruan Roisin
IE131059140214

Moustic

Eclair

Blaise

Pelletstown
Infernale

Pelletstown Buccaneer

F007 Belle De Nuit

Star Rating (Within Limousin breed)	Economic Indexes	€uro value per progeny	Index Reliability	Star rating (across all beef breeds)
★★★	Maternal	€71	33% (Low)	★★★
★	Terminal	€54	36% (Low)	★★★
	Dairy Beef			

Star Rating (Within Limousin breed)	Key profit traits	Index Value	Trait Reliability	Star rating (across all beef breeds)
Expected progeny performance				
★	Calving difficulty (% 3 & 4) Breed ave: 5.33%,All breeds ave: 5.49%	+7.01%	43% (Average)	★★★
★★★	Docility (1-5 scale) Breed ave: -0.06,All breeds ave: 0	-0.1 scale	46% (Average)	★
★	Carcass weight (kg) Breed ave: 18.61kg,All breeds ave: 18.25kg	+11.7kg	36% (Low)	★★★
★★★	Carcass conformation (1-15 scale) Breed ave: 1.79,All breeds ave: 1.57	+1.71 scale	31% (Low)	★★★★★

Expected daughter breeding performance				
★★★★★	Daughter calving diff (% 3 & 4) Breed ave: 5.9%,All breeds ave: 6.36%	+5.52%	30% (Low)	★★★★★
★★★★★	Daughter Milk (kg) Breed ave: -0.31kg,All breeds ave: 0.47kg	+5kg	29% (Low)	★★★★★
★★★★★	Daughter calving interval (days) Breed ave: 1.27days,All breeds ave: -0.2days	-0.31days	24% (Low)	★★★★★

Additional Information:

Linear composites	Value	Reliability
Muscle	100	54%
Skeletal	101	53%
Function	105	24%

Herd data quality index

N/A

Animal scored. Linear scores and weaning weights in evaluations

Lot 7 Ruan Famous

ID: IE131059180523

Breed: Limousin

Sex: Female

DOB: 16-Dec-2010

Owner: Sean Lyons - Ardron Ruan Co Clare

Breeder:

Sire: Honeylodge Admiral
IE121254470155

Ronick Hawk

Broadmeadows Cannon

Ronick Esther

Aheybridge Joan

Brownhill Harry

Poulnasherry Eimear

Dam: Ruan Beatrice
IE131059180408

Oakland Unicorn

0161 Galant

Cullohill Geraldine

Ruan Tuna

Dauphin

Bremore Icon

Star Rating (Within Limousin breed)	Economic Indexes	€uro value per progeny	Index Reliability	Star rating (across all beef breeds)
★	Maternal	€1	29% (Low)	★
★	Terminal	€41	33% (Low)	★★★
	Dairy Beef			

Star Rating (Within Limousin breed)	Key profit traits	Index Value	Trait Reliability	Star rating (across all beef breeds)
Expected progeny performance				
★★★	Calving difficulty (% 3 & 4) Breed ave: 5.33%,All breeds ave: 5.49%	+6.23%	40% (Average)	★★★
★	Docility (1-5 scale) Breed ave: -0.06,All breeds ave: 0	-0.22 scale	45% (Average)	★
★	Carcass weight (kg) Breed ave: 18.61kg,All breeds ave: 18.25kg	+4.9kg	33% (Low)	★
★	Carcass conformation (1-15 scale) Breed ave: 1.79,All breeds ave: 1.57	+1.5 scale	27% (Low)	★★★

Expected daughter breeding performance				
★★★★	Daughter calving diff (% 3 & 4) Breed ave: 5.9%,All breeds ave: 6.36%	+5.89%	27% (Low)	★★★★★
★★★★	Daughter Milk (kg) Breed ave: -0.31kg,All breeds ave: 0.47kg	+0kg	26% (Low)	★★★★★
★★	Daughter calving interval (days) Breed ave: 1.27days,All breeds ave: -0.2days	+2.05days	17% (V Low)	★

Additional Information:

Linear composites	Value	Reliability
Muscle	94	53%
Skeletal	85	52%
Function	111	23%

Herd data quality index

N/A

Animal scored. Linear scores and weaning weights in evaluations

Lot 8 Ruan Gerty

ID: IE131059110525

Breed: Limousin

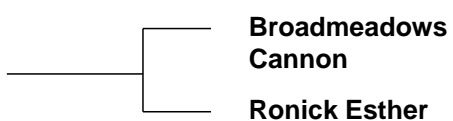
Sex: Female

DOB: 21-Feb-2011

Owner: Sean Lyons - Ardron Ruan Co Clare

Breeder:

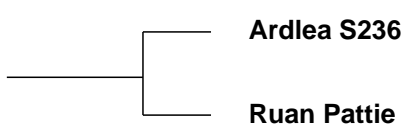
Sire: Ronick Hawk
RKH



Broadmeadows Vip
Broadmeadows Ainsi

Talent
Vanilla

Dam: Ruan Vatti
IE131059150355



Ideal 23
Elite Phillipa Et

Espoir
Pelletstown Indigo

Star Rating (Within Limousin breed)	Economic Indexes	€uro value per progeny	Index Reliability	Star rating (across all beef breeds)
★★★★★	Maternal	€160	35% (Low)	★★★★★
★★★★★	Terminal	€111	38% (Low)	★★★★★
	Dairy Beef			

Star Rating (Within Limousin breed)	Key profit traits	Index Value	Trait Reliability	Star rating (across all beef breeds)
Expected progeny performance				
★★★★★	Calving difficulty (% 3 & 4) Breed ave: 5.33%,All breeds ave: 5.49%	+4.31%	40% (Average)	★★★★☆
★★★☆☆	Docility (1-5 scale) Breed ave: -0.06,All breeds ave: 0	-0.08 scale	46% (Average)	★★☆☆
★★★★★☆☆	Carcass weight (kg) Breed ave: 18.61kg,All breeds ave: 18.25kg	+22.8kg	39% (Low)	★★★★☆☆
★★★★★	Carcass conformation (1-15 scale) Breed ave: 1.79,All breeds ave: 1.57	+1.88 scale	34% (Low)	★★★★★☆☆

Expected daughter breeding performance				
★	Daughter calving diff (% 3 & 4) Breed ave: 5.9%,All breeds ave: 6.36%	+6.83%	34% (Low)	★★★
★★★★★	Daughter Milk (kg) Breed ave: -0.31kg,All breeds ave: 0.47kg	+7.1kg	32% (Low)	★★★★★
★	Daughter calving interval (days) Breed ave: 1.27days,All breeds ave: -0.2days	+2.76days	26% (Low)	★

Additional Information:

Linear composites	Value	Reliability
Muscle	104	53%
Skeletal	110	52%
Function	109	29%

Herd data quality index

N/A

Animal scored. Linear scores and weaning weights in evaluations

Lot 9 Ruan Gertrude

ID: IE131059120534

Breed: Limousin

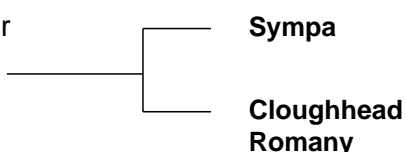
Sex: Female

DOB: 30-Aug-2011

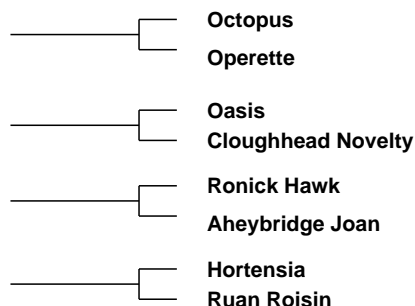
Owner: Sean Lyons - Ardron Ruan Co Clare

Breeder:

Sire: Haltcliffe Dancer
HCF



Dam: Ruan Denise
IE131059120476



Star Rating (Within Limousin breed)	Economic Indexes	€uro value per progeny	Index Reliability	Star rating (across all beef breeds)
★★★	Maternal	€61	27% (Low)	★★★
★	Terminal	€50	33% (Low)	★★★
	Dairy Beef			

Star Rating (Within Limousin breed)	Key profit traits	Index Value	Trait Reliability	Star rating (across all beef breeds)
Expected progeny performance				
★	Calving difficulty (% 3 & 4) Breed ave: 5.33%,All breeds ave: 5.49%	+10.6%	42% (Average)	★
★★★★★	Docility (1-5 scale) Breed ave: -0.06,All breeds ave: 0	-0.03 scale	44% (Average)	★★★★★
★★	Carcass weight (kg) Breed ave: 18.61kg,All breeds ave: 18.25kg	+16.8kg	30% (Low)	★★★
★★★★	Carcass conformation (1-15 scale) Breed ave: 1.79,All breeds ave: 1.57	+1.76 scale	22% (Low)	★★★★★

Expected daughter breeding performance				
★★★★★★	Daughter calving diff (% 3 & 4) Breed ave: 5.9%,All breeds ave: 6.36%	+3.99%	25% (Low)	★★★★★★
★★★★★	Daughter Milk (kg) Breed ave: -0.31kg,All breeds ave: 0.47kg	+0.8kg	19% (V Low)	★★★★★
★★★★	Daughter calving interval (days) Breed ave: 1.27days,All breeds ave: -0.2days	+0.12days	11% (V Low)	★★★★★

Additional Information:

Linear composites	Value	Reliability
Muscle	117	52%
Skeletal	100	51%
Function	110	20%

Herd data quality index

N/A

Animal scored. Linear scores and weaning weights in evaluations

Lot 10 Ruan Gina

ID: IE131059130535

Breed: Limousin

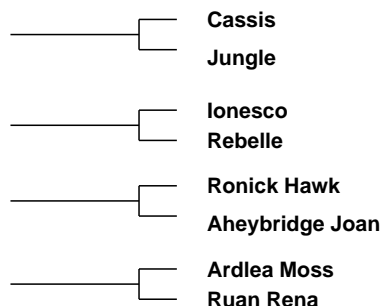
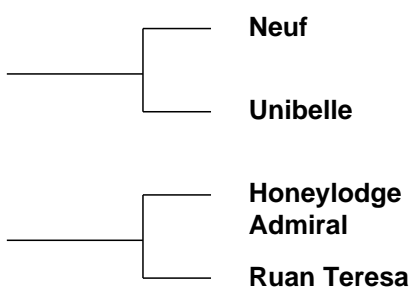
Sex: Female

DOB: 06-Sep-2011

Owner: Sean Lyons - Ardron Ruan Co Clare

Breeder:

Sire: Bolide
S983



Star Rating (Within Limousin breed)	Economic Indexes	€uro value per progeny	Index Reliability	Star rating (across all beef breeds)
★★★	Maternal	€84	23% (Low)	★★★☆☆
★	Terminal	€70	26% (Low)	★★★☆☆
	Dairy Beef			

Star Rating (Within Limousin breed)	Key profit traits	Index Value	Trait Reliability	Star rating (across all beef breeds)
Expected progeny performance				
★	Calving difficulty (% 3 & 4) Breed ave: 5.33%,All breeds ave: 5.49%	+6.71%	29% (Low)	★★★☆☆
★	Docility (1-5 scale) Breed ave: -0.06,All breeds ave: 0	-0.17 scale	39% (Low)	★★★☆☆
☆☆	Carcass weight (kg) Breed ave: 18.61kg,All breeds ave: 18.25kg	+12.4kg	28% (Low)	★★★☆☆
★★★★★	Carcass conformation (1-15 scale) Breed ave: 1.79,All breeds ave: 1.57	+1.89 scale	21% (Low)	★★★★★☆☆

Expected daughter breeding performance				
★★★★★☆☆	Daughter calving diff (% 3 & 4) Breed ave: 5.9%,All breeds ave: 6.36%	+5.48%	18% (V Low)	★★★★★☆☆
★★★☆☆	Daughter Milk (kg) Breed ave: -0.31kg,All breeds ave: 0.47kg	-0.6kg	18% (V Low)	★★★☆☆☆☆
★★★★★☆☆	Daughter calving interval (days) Breed ave: 1.27days,All breeds ave: -0.2days	+0.58days	11% (V Low)	★★★☆☆☆☆

Additional Information:

Linear composites	Value	Reliability
Muscle	109	50%
Skeletal	95	48%
Function	107	16%

Herd data quality index

N/A

Animal scored. Linear scores and weaning weights in evaluations

Lot 11 Ruan Gigi

ID: IE131059140536

Breed: Limousin

Sex: Female

DOB: 08-Sep-2011

Owner: Sean Lyons - Ardron Ruan Co Clare

Breeder:

Sire: Haltcliffe Dancer
HCF

Sympa

Octopus

Operette

Cloughhead
Romany

Oasis
Cloughhead Novelty

Dam: Ruan Delilia
IE131059170472

Honeylodge
Admiral

Ronick Hawk
Aheybridge Joan

Ruan Sammy

Ardlea Moss
Pelletstown Infernale

Star Rating (Within Limousin breed)	Economic Indexes	€uro value per progeny	Index Reliability	Star rating (across all beef breeds)
★	Maternal	€37	27% (Low)	★
★	Terminal	€52	33% (Low)	★★
	Dairy Beef			

Star Rating (Within Limousin breed)	Key profit traits	Index Value	Trait Reliability	Star rating (across all beef breeds)
Expected progeny performance				
★	Calving difficulty (% 3 & 4) Breed ave: 5.33%,All breeds ave: 5.49%	+9.43%	42% (Average)	★
★	Docility (1-5 scale) Breed ave: -0.06,All breeds ave: 0	-0.14 scale	44% (Average)	★
★★★★★	Carcass weight (kg) Breed ave: 18.61kg,All breeds ave: 18.25kg	+20kg	30% (Low)	★★★
★★★	Carcass conformation (1-15 scale) Breed ave: 1.79,All breeds ave: 1.57	+1.66 scale	23% (Low)	★★★★★

Expected daughter breeding performance				
★★★★★★	Daughter calving diff (% 3 & 4) Breed ave: 5.9%,All breeds ave: 6.36%	+4.4%	25% (Low)	★★★★★★
★★★★	Daughter Milk (kg) Breed ave: -0.31kg,All breeds ave: 0.47kg	+0kg	19% (V Low)	★★★
★★★★★	Daughter calving interval (days) Breed ave: 1.27days,All breeds ave: -0.2days	+0.77days	11% (V Low)	★★

Additional Information:

Linear composites	Value	Reliability
Muscle	124	52%
Skeletal	104	51%
Function	108	20%

Herd data quality index

N/A

Animal scored. Linear scores and weaning weights in evaluations

Lot 12 Ruan Gabby 2

ID: IE131059190540

Breed: Limousin

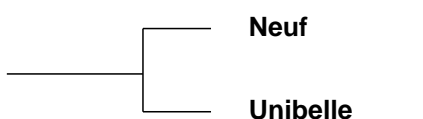
Sex: Female

DOB: 13-Sep-2011

Owner: Sean Lyons - Ardron Ruan Co Clare

Breeder:

Sire: Bolide
S983



Dam: Ruan Danielle
IE131059110467



Star Rating (Within Limousin breed)	Economic Indexes	€uro value per progeny	Index Reliability	Star rating (across all beef breeds)
★★★	Maternal	€81	22% (Low)	★★★☆☆
★	Terminal	€65	26% (Low)	★★★☆☆
	Dairy Beef			

Star Rating (Within Limousin breed)	Key profit traits	Index Value	Trait Reliability	Star rating (across all beef breeds)
Expected progeny performance				
★	Calving difficulty (% 3 & 4) Breed ave: 5.33%,All breeds ave: 5.49%	+6.92%	29% (Low)	★★★☆☆
★★★★	Docility (1-5 scale) Breed ave: -0.06,All breeds ave: 0	-0.06 scale	39% (Low)	★★★☆☆
★	Carcass weight (kg) Breed ave: 18.61kg,All breeds ave: 18.25kg	+11.9kg	27% (Low)	★★★☆☆
★★★★☆	Carcass conformation (1-15 scale) Breed ave: 1.79,All breeds ave: 1.57	+1.76 scale	21% (Low)	★★★★★☆☆

Expected daughter breeding performance				
★★★★★	Daughter calving diff (% 3 & 4) Breed ave: 5.9%,All breeds ave: 6.36%	+5.33%	18% (V Low)	★★★★★☆☆
★★★☆☆	Daughter Milk (kg) Breed ave: -0.31kg,All breeds ave: 0.47kg	-0.8kg	18% (V Low)	★★★☆☆☆☆
★★★★★	Daughter calving interval (days) Breed ave: 1.27days,All breeds ave: -0.2days	+0.26days	11% (V Low)	★★★★★☆☆

Additional Information:

Linear composites	Value	Reliability
Muscle	109	50%
Skeletal	94	48%
Function	120	16%

Herd data quality index

N/A

Animal scored. Linear scores and weaning weights in evaluations

Lot 13 Ruan Gem

ID: IE131059110541

Breed: Limousin

Sex: Female

DOB: 28-Sep-2011

Owner: Sean Lyons - Ardron Ruan Co Clare

Breeder:

Sire: Honeylodge Admiral
IE121254470155

Ronick Hawk

Broadmeadows Cannon

Ronick Esther

Aheybridge Joan

Brownhill Harry

Poulnasherry Eimear

Dam: Drumnagoon Peck
IE171022360065

Drumnagoon
Launcelot

Ulex

Napolitaine

Drumnagoon
Kuddles

Drumeel Hector Et

Drumnagoon Goldie

Star Rating (Within Limousin breed)	Economic Indexes	€uro value per progeny	Index Reliability	Star rating (across all beef breeds)
★★★	Maternal	€63	30% (Low)	★★★
★	Terminal	€59	34% (Low)	★★★
	Dairy Beef			

Star Rating (Within Limousin breed)	Key profit traits	Index Value	Trait Reliability	Star rating (across all beef breeds)
Expected progeny performance				
★★★	Calving difficulty (% 3 & 4) Breed ave: 5.33%,All breeds ave: 5.49%	+6.13%	38% (Low)	★★★☆☆
★	Docility (1-5 scale) Breed ave: -0.06,All breeds ave: 0	-0.2 scale	45% (Average)	★☆☆
★	Carcass weight (kg) Breed ave: 18.61kg,All breeds ave: 18.25kg	+11.4kg	37% (Low)	★★★☆☆
★★★	Carcass conformation (1-15 scale) Breed ave: 1.79,All breeds ave: 1.57	+1.64 scale	31% (Low)	★★★★★

Expected daughter breeding performance				
★★★★★	Daughter calving diff (% 3 & 4) Breed ave: 5.9%,All breeds ave: 6.36%	+6.04%	28% (Low)	★★★★★☆☆
★★★★★☆☆	Daughter Milk (kg) Breed ave: -0.31kg,All breeds ave: 0.47kg	+3.2kg	23% (Low)	★★★★★☆☆
★★★★★	Daughter calving interval (days) Breed ave: 1.27days,All breeds ave: -0.2days	+1.21days	19% (V Low)	★★★☆☆

Additional Information:

Linear composites	Value	Reliability
Muscle	99	54%
Skeletal	94	53%
Function	103	23%

Herd data quality index

N/A

Animal scored. Linear scores and weaning weights in evaluations

Lot 14 Ruan Gail

ID: IE131059120542

Breed: Limousin

Sex: Female

DOB: 28-Sep-2011

Owner: Sean Lyons - Ardron Ruan Co Clare

Breeder:

Sire: Honeylodge Admiral
IE121254470155

Ronick Hawk

Broadmeadows Cannon

Ronick Esther

Aheybridge Joan

Brownhill Harry

Poulnasherry Eimear

Dam: Lake Ballerina
IE131636240465

Navarin

Imperial

Intuitive

Lake Skittle

Epson

Lake Laura

Star Rating (Within Limousin breed)	Economic Indexes	€uro value per progeny	Index Reliability	Star rating (across all beef breeds)
★	Maternal	€43	31% (Low)	★★★
★	Terminal	€50	35% (Low)	★★★
	Dairy Beef			

Star Rating (Within Limousin breed)	Key profit traits	Index Value	Trait Reliability	Star rating (across all beef breeds)
Expected progeny performance				
★	Calving difficulty (% 3 & 4) Breed ave: 5.33%,All breeds ave: 5.49%	+6.73%	42% (Average)	★★★
★	Docility (1-5 scale) Breed ave: -0.06,All breeds ave: 0	-0.19 scale	45% (Average)	★★★
★	Carcass weight (kg) Breed ave: 18.61kg,All breeds ave: 18.25kg	+9.3kg	35% (Low)	★★★
★	Carcass conformation (1-15 scale) Breed ave: 1.79,All breeds ave: 1.57	+1.56 scale	29% (Low)	★★★★★

Expected daughter breeding performance				
★★★★★	Daughter calving diff (% 3 & 4) Breed ave: 5.9%,All breeds ave: 6.36%	+5.87%	29% (Low)	★★★★★
★★★★★	Daughter Milk (kg) Breed ave: -0.31kg,All breeds ave: 0.47kg	+3.6kg	26% (Low)	★★★★★
★★★★★	Daughter calving interval (days) Breed ave: 1.27days,All breeds ave: -0.2days	+0.86days	19% (V Low)	★★★

Additional Information:

Linear composites	Value	Reliability
Muscle	95	53%
Skeletal	90	53%
Function	100	25%

Herd data quality index

N/A

Animal scored. Linear scores and weaning weights in evaluations

Lot 15 Ruan Gala

ID: IE131059130543

Breed: Limousin

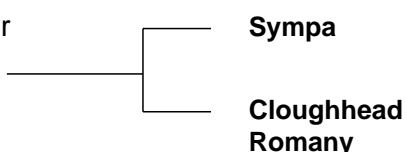
Sex: Female

DOB: 08-Oct-2011

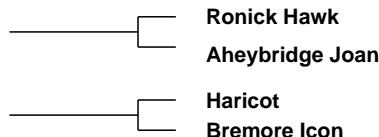
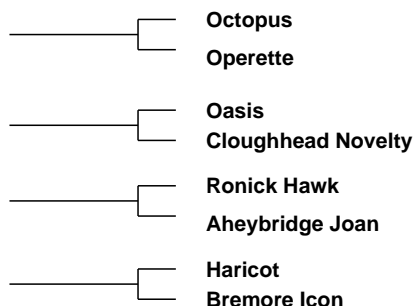
Owner: Sean Lyons - Ardron Ruan Co Clare

Breeder:

Sire: Haltcliffe Dancer
HCF



Dam: Ruan Cora
IE131059170423



Star Rating (Within Limousin breed)	Economic Indexes	€uro value per progeny	Index Reliability	Star rating (across all beef breeds)
★	Maternal	€60	27% (Low)	★★
☆	Terminal	€42	33% (Low)	★★☆
	Dairy Beef			

Star Rating (Within Limousin breed)	Key profit traits	Index Value	Trait Reliability	Star rating (across all beef breeds)
Expected progeny performance				
☆	Calving difficulty (% 3 & 4) Breed ave: 5.33%,All breeds ave: 5.49%	+9.44%	42% (Average)	★
★★★★	Docility (1-5 scale) Breed ave: -0.06,All breeds ave: 0	-0.05 scale	44% (Average)	★★★
☆	Carcass weight (kg) Breed ave: 18.61kg,All breeds ave: 18.25kg	+11.9kg	30% (Low)	★★★
★★	Carcass conformation (1-15 scale) Breed ave: 1.79,All breeds ave: 1.57	+1.71 scale	22% (Low)	★★★★☆

Expected daughter breeding performance				
★★★★★★	Daughter calving diff (% 3 & 4) Breed ave: 5.9%,All breeds ave: 6.36%	+4.14%	25% (Low)	★★★★★★
★★★★	Daughter Milk (kg) Breed ave: -0.31kg,All breeds ave: 0.47kg	+1.9kg	22% (Low)	★★★★
★★★★★★	Daughter calving interval (days) Breed ave: 1.27days,All breeds ave: -0.2days	-0.82days	12% (V Low)	★★★★

Additional Information:

Linear composites	Value	Reliability
Muscle	112	52%
Skeletal	90	52%
Function	107	21%

Herd data quality index

N/A

Animal scored. Linear scores and weaning weights in evaluations

Lot 16 Ruan Gabor

ID: IE131059160546

Breed: Limousin

Sex: Female

DOB: 09-Oct-2011

Owner: Sean Lyons - Ardron Ruan Co Clare

Breeder:

Sire: Honeylodge Admiral
IE121254470155

Ronick Hawk

Broadmeadows Cannon

Ronick Esther

Aheybridge Joan

Brownhill Harry

Poulnasherry Eimear

Dam: Baileys Ditto
IE281515250321

Castleboy Viv

Nenuphar

Castleboy Sue

Baileys Alison (Et)

Grahams Samson

Barnhill Kitty

Star Rating (Within Limousin breed)	Economic Indexes	€uro value per progeny	Index Reliability	Star rating (across all beef breeds)
★	Maternal	€19	30% (Low)	★
★	Terminal	€52	33% (Low)	★★
	Dairy Beef			

Star Rating (Within Limousin breed)	Key profit traits	Index Value	Trait Reliability	Star rating (across all beef breeds)
Expected progeny performance				
★	Calving difficulty (% 3 & 4) Breed ave: 5.33%,All breeds ave: 5.49%	+8.99%	41% (Average)	★
★★	Docility (1-5 scale) Breed ave: -0.06,All breeds ave: 0	-0.09 scale	45% (Average)	★★★
★	Carcass weight (kg) Breed ave: 18.61kg,All breeds ave: 18.25kg	+13.9kg	34% (Low)	★★
★	Carcass conformation (1-15 scale) Breed ave: 1.79,All breeds ave: 1.57	+1.62 scale	28% (Low)	★★★★

Expected daughter breeding performance				
★★★★★	Daughter calving diff (% 3 & 4) Breed ave: 5.9%,All breeds ave: 6.36%	+5.12%	27% (Low)	★★★★★
★★★★	Daughter Milk (kg) Breed ave: -0.31kg,All breeds ave: 0.47kg	+1.6kg	24% (Low)	★★★
★	Daughter calving interval (days) Breed ave: 1.27days,All breeds ave: -0.2days	+3.35days	17% (V Low)	★

Additional Information:

Linear composites	Value	Reliability
Muscle	108	53%
Skeletal	93	52%
Function	111	23%

Herd data quality index

N/A

Animal scored. Linear scores and weaning weights in evaluations

Lot 17 Ruan Gemma

ID: IE131059170547

Breed: Limousin

Sex: Female

DOB: 09-Oct-2011

Owner: Sean Lyons - Ardron Ruan Co Clare

Breeder:

Sire: Honeylodge Admiral
IE121254470155

Ronick Hawk

Broadmeadows Cannon

Ronick Esther

Aheybridge Joan

Brownhill Harry

Poulnasherry Eimear

Dam: Ruan Vindigo
IE131059160356

Ardlea S236

Ideal 23

Elite Phillipa Et

Pelletstown Indigo

Pelletstown Buccaneer

Pelletstown Flamingo Et

Star Rating (Within Limousin breed)	Economic Indexes	€uro value per progeny	Index Reliability	Star rating (across all beef breeds)
★★★★☆	Maternal	€109	31% (Low)	★★★★☆
★★	Terminal	€81	35% (Low)	★★★
	Dairy Beef			

Star Rating (Within Limousin breed)	Key profit traits	Index Value	Trait Reliability	Star rating (across all beef breeds)
Expected progeny performance				
★★★☆☆	Calving difficulty (% 3 & 4) Breed ave: 5.33%,All breeds ave: 5.49%	+5.64%	42% (Average)	★★★☆☆
★★★★	Docility (1-5 scale) Breed ave: -0.06,All breeds ave: 0	-0.05 scale	46% (Average)	★★★
★★	Carcass weight (kg) Breed ave: 18.61kg,All breeds ave: 18.25kg	+16.8kg	35% (Low)	★★★☆☆
★★★★★☆☆	Carcass conformation (1-15 scale) Breed ave: 1.79,All breeds ave: 1.57	+1.83 scale	29% (Low)	★★★★★☆☆

Expected daughter breeding performance				
★★	Daughter calving diff (% 3 & 4) Breed ave: 5.9%,All breeds ave: 6.36%	+6.14%	29% (Low)	★★★
★★★★★☆☆	Daughter Milk (kg) Breed ave: -0.31kg,All breeds ave: 0.47kg	+5.6kg	28% (Low)	★★★★★☆☆
★★☆☆	Daughter calving interval (days) Breed ave: 1.27days,All breeds ave: -0.2days	+2.2days	19% (V Low)	★

Additional Information:

Linear composites	Value	Reliability
Muscle	119	54%
Skeletal	99	53%
Function	105	24%

Herd data quality index

N/A

Animal scored. Linear scores and weaning weights in evaluations

Lot 18 Ruan Grainne

ID: IE131059180548

Breed: Limousin

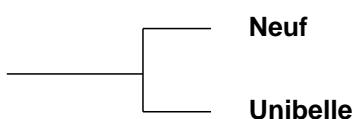
Sex: Female

DOB: 10-Oct-2011

Owner: Sean Lyons - Ardron Ruan Co Clare

Breeder:

Sire: Bolide
S983



Dam: Ruan Delia
IE131059150454



Star Rating (Within Limousin breed)	Economic Indexes	€uro value per progeny	Index Reliability	Star rating (across all beef breeds)
★★★★★	Maternal	€132	22% (Low)	★★★★
★★★★★	Terminal	€102	26% (Low)	★★★★★
	Dairy Beef			

Star Rating (Within Limousin breed)	Key profit traits	Index Value	Trait Reliability	Star rating (across all beef breeds)
Expected progeny performance				
★★★	Calving difficulty (% 3 & 4) Breed ave: 5.33%,All breeds ave: 5.49%	+5%	29% (Low)	★★★
★★★	Docility (1-5 scale) Breed ave: -0.06,All breeds ave: 0	-0.05 scale	41% (Average)	★★
★★★★★	Carcass weight (kg) Breed ave: 18.61kg,All breeds ave: 18.25kg	+22.4kg	29% (Low)	★★★★★
★★★★★	Carcass conformation (1-15 scale) Breed ave: 1.79,All breeds ave: 1.57	+1.88 scale	22% (Low)	★★★★★

Expected daughter breeding performance				
★★★	Daughter calving diff (% 3 & 4) Breed ave: 5.9%,All breeds ave: 6.36%	+6.04%	18% (V Low)	★★★★★
★★★	Daughter Milk (kg) Breed ave: -0.31kg,All breeds ave: 0.47kg	+0kg	18% (V Low)	★★★
★★	Daughter calving interval (days) Breed ave: 1.27days,All breeds ave: -0.2days	+1.9days	11% (V Low)	★

Additional Information:

Linear composites	Value	Reliability
Muscle	123	38%
Skeletal	123	36%
Function	113	22%

Herd data quality index

N/A

Animal scored. Linear scores and weaning weights in evaluations

Lot 19 Ruan Grace

ID: IE131059190549

Breed: Limousin

Sex: Female

DOB: 11-Oct-2011

Owner: Sean Lyons - Ardron Ruan Co Clare

Breeder:

Sire: Procters Cavalier
PZE

Haltcliffe Vermont

Penyrheol Sam

Renoncule

Procters Prunella

Daim

Marnhull Isobella

Dam: Ruan Bea
IE131059160414

Shire Milton

Ronick Gains

Colombe

Ruan Pattie

Espoir

Pelletstown Indigo

Star Rating (Within Limousin breed)	Economic Indexes	€uro value per progeny	Index Reliability	Star rating (across all beef breeds)
★★	Maternal	€84	23% (Low)	★★★
★★★	Terminal	€89	27% (Low)	★★★★
	Dairy Beef			

Star Rating (Within Limousin breed)	Key profit traits	Index Value	Trait Reliability	Star rating (across all beef breeds)
Expected progeny performance				
★	Calving difficulty (% 3 & 4) Breed ave: 5.33%,All breeds ave: 5.49%	+7.04%	32% (Low)	★★
★★	Docility (1-5 scale) Breed ave: -0.06,All breeds ave: 0	-0.09 scale	42% (Average)	★★
★★★★	Carcass weight (kg) Breed ave: 18.61kg,All breeds ave: 18.25kg	+21.4kg	29% (Low)	★★★★★
★★★	Carcass conformation (1-15 scale) Breed ave: 1.79,All breeds ave: 1.57	+1.77 scale	21% (Low)	★★★★

Expected daughter breeding performance				
★★	Daughter calving diff (% 3 & 4) Breed ave: 5.9%,All breeds ave: 6.36%	+6.27%	20% (Low)	★★★★
★	Daughter Milk (kg) Breed ave: -0.31kg,All breeds ave: 0.47kg	-5.7kg	22% (Low)	★
★★★★★	Daughter calving interval (days) Breed ave: 1.27days,All breeds ave: -0.2days	-0.05days	10% (V Low)	★★★

Additional Information:

Linear composites	Value	Reliability
Muscle	109	41%
Skeletal	107	39%
Function	98	21%

Herd data quality index

N/A

Animal scored. Linear scores and weaning weights in evaluations

Lot 20 Ruan Gillian

ID: IE131059120550

Breed: Limousin

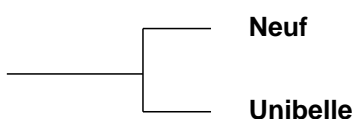
Sex: Female

DOB: 17-Oct-2011

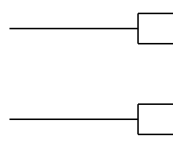
Owner: Sean Lyons - Ardron Ruan Co Clare

Breeder:

Sire: Bolide
S983

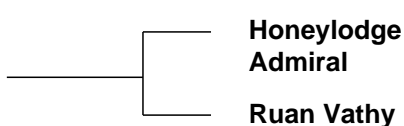


Cassis
Jungle

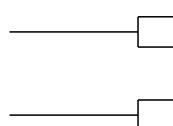


Ionesco
Rebelle

Dam: Ruan Debby
IE131059160471



Ronick Hawk
Aheybridge Joan



Ardlea S236
Ruan Kathy

Star Rating (Within Limousin breed)	Economic Indexes	€uro value per progeny	Index Reliability	Star rating (across all beef breeds)
★★★	Maternal	€74	22% (Low)	★★★☆☆
★	Terminal	€65	26% (Low)	★★★☆☆
	Dairy Beef			

Star Rating (Within Limousin breed)	Key profit traits	Index Value	Trait Reliability	Star rating (across all beef breeds)
Expected progeny performance				
★★★☆☆	Calving difficulty (% 3 & 4) Breed ave: 5.33%,All breeds ave: 5.49%	+6.41%	29% (Low)	★★★☆☆
★★★☆☆	Docility (1-5 scale) Breed ave: -0.06,All breeds ave: 0	-0.09 scale	41% (Average)	★★★☆☆
★☆☆☆☆	Carcass weight (kg) Breed ave: 18.61kg,All breeds ave: 18.25kg	+11kg	29% (Low)	★★★☆☆
★★★☆☆	Carcass conformation (1-15 scale) Breed ave: 1.79,All breeds ave: 1.57	+1.73 scale	21% (Low)	★★★★★☆☆

Expected daughter breeding performance				
★★★★★☆☆	Daughter calving diff (% 3 & 4) Breed ave: 5.9%,All breeds ave: 6.36%	+5.67%	18% (V Low)	★★★★★☆☆
★★★★★☆☆	Daughter Milk (kg) Breed ave: -0.31kg,All breeds ave: 0.47kg	+0.9kg	18% (V Low)	★★★★★☆☆
★★★☆☆	Daughter calving interval (days) Breed ave: 1.27days,All breeds ave: -0.2days	+1.97days	11% (V Low)	★☆☆☆☆

Additional Information:

Linear composites	Value	Reliability
Muscle	115	38%
Skeletal	92	35%
Function	117	22%

Herd data quality index

N/A

Animal scored. Linear scores and weaning weights in evaluations

Lot 21 Ruan Goretti

ID: IE131059170555

Breed: Limousin

Sex: Female

DOB: 30-Dec-2011

Owner: Sean Lyons - Ardron Ruan Co Clare

Breeder:

Sire: Honeylodge Admiral
IE121254470155

Ronick Hawk

Broadmeadows Cannon

Ronick Esther

Aheybridge Joan

Brownhill Harry

Poulnasherry Eimear

Dam: Lake Blossom
IE131636230489

Navarin

Imperial

Intuitive

Lake Roxanne

Highlander

Lake Nix

Star Rating (Within Limousin breed)	Economic Indexes	€uro value per progeny	Index Reliability	Star rating (across all beef breeds)
★★★	Maternal	€68	30% (Low)	★★★
★	Terminal	€59	34% (Low)	★★★
	Dairy Beef			

Star Rating (Within Limousin breed)	Key profit traits	Index Value	Trait Reliability	Star rating (across all beef breeds)
Expected progeny performance				
★	Calving difficulty (% 3 & 4) Breed ave: 5.33%,All breeds ave: 5.49%	+7.11%	41% (Average)	★★★
★	Docility (1-5 scale) Breed ave: -0.06,All breeds ave: 0	-0.15 scale	45% (Average)	★★
★	Carcass weight (kg) Breed ave: 18.61kg,All breeds ave: 18.25kg	+14.3kg	35% (Low)	★★★
★	Carcass conformation (1-15 scale) Breed ave: 1.79,All breeds ave: 1.57	+1.62 scale	29% (Low)	★★★★

Expected daughter breeding performance				
★★★★★	Daughter calving diff (% 3 & 4) Breed ave: 5.9%,All breeds ave: 6.36%	+5.5%	28% (Low)	★★★★★
★★★★★	Daughter Milk (kg) Breed ave: -0.31kg,All breeds ave: 0.47kg	+7.2kg	28% (Low)	★★★★★
★★★	Daughter calving interval (days) Breed ave: 1.27days,All breeds ave: -0.2days	+2.25days	19% (V Low)	★★★

Additional Information:

Linear composites	Value	Reliability
Muscle	121	47%
Skeletal	95	47%
Function	91	34%

Herd data quality index

N/A

Animal scored. Linear scores and weaning weights in evaluations

Lot 22 Ruan Honora

ID: IE131059180556

Breed: Limousin

Sex: Female

DOB: 04-Jan-2012

Owner: Sean Lyons - Ardron Ruan Co Clare

Breeder:

Sire: Haltcliffe Dancer
HCF

Sympa

Octopus

Operette

Cloughhead
Romany

Oasis

Cloughhead Novelty

Dam: Ruan Erin
IE131059150479

Honeylodge
Admiral

Ronick Hawk

Aheybridge Joan

Ruan Pamela

Moustick

Ruan Lucy

Star Rating (Within Limousin breed)	Economic Indexes	€uro value per progeny	Index Reliability	Star rating (across all beef breeds)
★	Maternal	€35	26% (Low)	★
★	Terminal	€43	31% (Low)	★★★
	Dairy Beef			

Star Rating (Within Limousin breed)	Key profit traits	Index Value	Trait Reliability	Star rating (across all beef breeds)
Expected progeny performance				
★	Calving difficulty (% 3 & 4) Breed ave: 5.33%,All breeds ave: 5.49%	+12.19%	41% (Average)	★
★★★★★	Docility (1-5 scale) Breed ave: -0.06,All breeds ave: 0	0.02 scale	43% (Average)	★★★★★
★★	Carcass weight (kg) Breed ave: 18.61kg,All breeds ave: 18.25kg	+17kg	30% (Low)	★★★
★★★	Carcass conformation (1-15 scale) Breed ave: 1.79,All breeds ave: 1.57	+1.78 scale	22% (Low)	★★★★★

Expected daughter breeding performance				
★★★★★	Daughter calving diff (% 3 & 4) Breed ave: 5.9%,All breeds ave: 6.36%	+3.42%	25% (Low)	★★★★★
★★★★	Daughter Milk (kg) Breed ave: -0.31kg,All breeds ave: 0.47kg	+0.8kg	22% (Low)	★★★★
★★★	Daughter calving interval (days) Breed ave: 1.27days,All breeds ave: -0.2days	+0.95days	11% (V Low)	★★★

Additional Information:

Linear composites	Value	Reliability
Muscle	112	41%
Skeletal	98	41%
Function	120	28%

Herd data quality index

N/A

Animal scored. Linear scores and weaning weights in evaluations

Lot 23 Ruan Hanna

ID: IE131059150561

Breed: Limousin

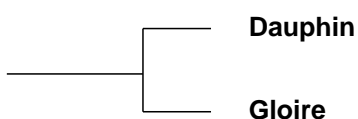
Sex: Female

DOB: 19-Jan-2012

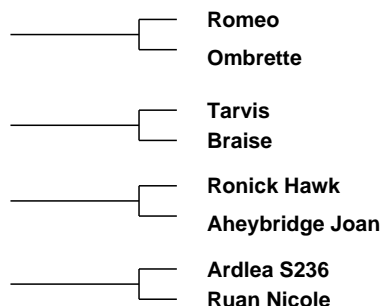
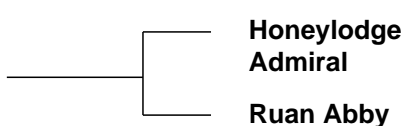
Owner: Sean Lyons - Ardron Ruan Co Clare

Breeder:

Sire: Palmares
PAM



Dam: Ruan Dimples
IE131059140453



Star Rating (Within Limousin breed)	Economic Indexes	€uro value per progeny	Index Reliability	Star rating (across all beef breeds)
★★★★★	Maternal	€121	35% (Low)	★★★★★
★★★☆☆	Terminal	€86	38% (Low)	★★★★☆
	Dairy Beef			

Star Rating (Within Limousin breed)	Key profit traits	Index Value	Trait Reliability	Star rating (across all beef breeds)
Expected progeny performance				
★★★★★	Calving difficulty (% 3 & 4) Breed ave: 5.33%,All breeds ave: 5.49%	+4.44%	42% (Average)	★★★★☆
★★★★★☆☆	Docility (1-5 scale) Breed ave: -0.06,All breeds ave: 0	0.02 scale	47% (Average)	★★★★
★	Carcass weight (kg) Breed ave: 18.61kg,All breeds ave: 18.25kg	+13.6kg	39% (Low)	★★
★★★★	Carcass conformation (1-15 scale) Breed ave: 1.79,All breeds ave: 1.57	+1.8 scale	34% (Low)	★★★★★

Expected daughter breeding performance				
★★☆	Daughter calving diff (% 3 & 4) Breed ave: 5.9%,All breeds ave: 6.36%	+6.37%	35% (Low)	★★★☆☆
★★★★☆	Daughter Milk (kg) Breed ave: -0.31kg,All breeds ave: 0.47kg	+1kg	32% (Low)	★★★★
★★★★☆	Daughter calving interval (days) Breed ave: 1.27days,All breeds ave: -0.2days	+0.6days	28% (Low)	★★

Additional Information:

Linear composites	Value	Reliability
Muscle	110	48%
Skeletal	85	48%
Function	104	38%

Herd data quality index

N/A

Animal scored. Linear scores and weaning weights in evaluations

Lot 24 Ruan Heidi

ID: IE131059180564

Breed: Limousin

Sex: Female

DOB: 14-Feb-2012

Owner: Sean Lyons - Ardron Ruan Co Clare

Breeder:

Sire: Honeylodge Admiral
IE121254470155

Ronick Hawk

Broadmeadows Cannon

Ronick Esther

Aheybridge Joan

Brownhill Harry

Poulnasherry Eimear

Dam: Ruan Ellie
IE131059140486

Limo Tanat

C550 Mostyn

Carmorn Orna

Lake Alanis

Navarin

Lake Roxanne

Star Rating (Within Limousin breed)	Economic Indexes	€uro value per progeny	Index Reliability	Star rating (across all beef breeds)
★★★★☆	Maternal	€105	29% (Low)	★★★★☆
★★☆	Terminal	€78	33% (Low)	★★★
	Dairy Beef			

Star Rating (Within Limousin breed)	Key profit traits	Index Value	Trait Reliability	Star rating (across all beef breeds)
Expected progeny performance				
★★★★	Calving difficulty (% 3 & 4) Breed ave: 5.33%,All breeds ave: 5.49%	+5.09%	41% (Average)	★★★
★★★★	Docility (1-5 scale) Breed ave: -0.06,All breeds ave: 0	-0.06 scale	43% (Average)	★★☆
★	Carcass weight (kg) Breed ave: 18.61kg,All breeds ave: 18.25kg	+13kg	34% (Low)	★★
★★★★☆	Carcass conformation (1-15 scale) Breed ave: 1.79,All breeds ave: 1.57	+1.84 scale	28% (Low)	★★★★☆

Expected daughter breeding performance				
★★	Daughter calving diff (% 3 & 4) Breed ave: 5.9%,All breeds ave: 6.36%	+6.16%	27% (Low)	★★★
★★★★★	Daughter Milk (kg) Breed ave: -0.31kg,All breeds ave: 0.47kg	+4.6kg	25% (Low)	★★★★☆
★★	Daughter calving interval (days) Breed ave: 1.27days,All breeds ave: -0.2days	+2.04days	16% (V Low)	★

Additional Information:

Linear composites	Value	Reliability
Muscle	117	41%
Skeletal	91	41%
Function	107	31%

Herd data quality index

N/A

Animal scored. Linear scores and weaning weights in evaluations

Lot 25 Ruan Gaza

ID: IE131059150537

Breed: Limousin

Sex: Male

DOB: 09-Sep-2011

Owner: Sean Lyons - Ardron Ruan Co Clare

Breeder:

Sire: Honeylodge Admiral
IE121254470155

Ronick Hawk

Broadmeadows Cannon

Ronick Esther

Aheybridge Joan

Brownhill Harry

Poulnasherry Eimear

Dam: Ruan Tanya
IE131059190292

Ardlea Moss

Justicier

F004 Joconde

Ruan Majella

Golfeur

Bremore Icon

Star Rating (Within Limousin breed)	Economic Indexes	€uro value per progeny	Index Reliability	Star rating (across all beef breeds)
★	Maternal	€29	31% (Low)	★
★	Terminal	€43	35% (Low)	★★★
	Dairy Beef			

Star Rating (Within Limousin breed)	Key profit traits	Index Value	Trait Reliability	Star rating (across all beef breeds)
Expected progeny performance				
★	Calving difficulty (% 3 & 4) Breed ave: 5.33%,All breeds ave: 5.49%	+11.02%	43% (Average)	★
★★★	Docility (1-5 scale) Breed ave: -0.06,All breeds ave: 0	-0.07 scale	46% (Average)	★★★
★★★★★	Carcass weight (kg) Breed ave: 18.61kg,All breeds ave: 18.25kg	+20kg	36% (Low)	★★★★★
★	Carcass conformation (1-15 scale) Breed ave: 1.79,All breeds ave: 1.57	+1.63 scale	30% (Low)	★★★★

Expected daughter breeding performance				
★★★★★	Daughter calving diff (% 3 & 4) Breed ave: 5.9%,All breeds ave: 6.36%	+4.86%	30% (Low)	★★★★★
★★★★★	Daughter Milk (kg) Breed ave: -0.31kg,All breeds ave: 0.47kg	+3.8kg	26% (Low)	★★★★★
★★★	Daughter calving interval (days) Breed ave: 1.27days,All breeds ave: -0.2days	+1.38days	19% (V Low)	★★★

Additional Information:

Bull suitable for pedigree breeding

Linear composites	Value	Reliability
Muscle	107	54%
Skeletal	131	53%
Function	105	24%

Herd data quality index

N/A

Animal scored. Linear scores and weaning weights in evaluations

Lot 26 Ruan Gura

ID: IE131059160538

Breed: Limousin

Sex: Male

DOB: 12-Sep-2011

Owner: Sean Lyons - Ardron Ruan Co Clare

Breeder:

Sire: Honeylodge Admiral
IE121254470155

Ronick Hawk

Broadmeadows Cannon

Ronick Esther

Aheybridge Joan

Brownhill Harry

Poulnasherry Eimear

Dam: Ruan Pattie
IE131059180151

Espoir

Bill

Aquila

Pelletstown Indigo

Pelletstown Buccaneer

Pelletstown Flamingo Et

Star Rating (Within Limousin breed)	Economic Indexes	€uro value per progeny	Index Reliability	Star rating (across all beef breeds)
★★★★☆	Maternal	€114	32% (Low)	★★★★☆
★★★★☆	Terminal	€95	35% (Low)	★★★★★
	Dairy Beef			

Star Rating (Within Limousin breed)	Key profit traits	Index Value	Trait Reliability	Star rating (across all beef breeds)
Expected progeny performance				
★★★☆☆	Calving difficulty (% 3 & 4) Breed ave: 5.33%,All breeds ave: 5.49%	+5.37%	37% (Low)	★★★★
★★★★★☆☆	Docility (1-5 scale) Breed ave: -0.06,All breeds ave: 0	0 scale	47% (Average)	★★★★
★★★★★☆☆	Carcass weight (kg) Breed ave: 18.61kg,All breeds ave: 18.25kg	+22.9kg	37% (Low)	★★★★★☆☆
★★★☆☆	Carcass conformation (1-15 scale) Breed ave: 1.79,All breeds ave: 1.57	+1.77 scale	32% (Low)	★★★★★

Expected daughter breeding performance				
★★★	Daughter calving diff (% 3 & 4) Breed ave: 5.9%,All breeds ave: 6.36%	+6.18%	29% (Low)	★★★★
★★★★★☆☆	Daughter Milk (kg) Breed ave: -0.31kg,All breeds ave: 0.47kg	+3.1kg	26% (Low)	★★★★★☆☆
★	Daughter calving interval (days) Breed ave: 1.27days,All breeds ave: -0.2days	+3.27days	25% (Low)	☆☆

Additional Information:

Linear composites	Value	Reliability
Muscle	104	54%
Skeletal	120	53%
Function	93	25%

Herd data quality index

N/A

Animal scored. Linear scores and weaning weights in evaluations

Lot 27 Ruan George

ID: IE131059170539

Breed: Limousin

Sex: Male

DOB: 12-Sep-2011

Owner: Sean Lyons - Ardron Ruan Co Clare

Breeder:

Sire: Honeylodge Admiral
IE121254470155

Ronick Hawk

Broadmeadows Cannon

Ronick Esther

Aheybridge Joan

Brownhill Harry

Poulnasherry Eimear

Dam: Ruan Barby
IE131059130403

Ocean

Espoir

Gloria

Ruan Rosaleen

Ferry

Bremore Icon

Star Rating (Within Limousin breed)	Economic Indexes	€uro value per progeny	Index Reliability	Star rating (across all beef breeds)
★★★	Maternal	€75	30% (Low)	★★★☆☆
★	Terminal	€64	35% (Low)	★★★☆☆
	Dairy Beef			

Star Rating (Within Limousin breed)	Key profit traits	Index Value	Trait Reliability	Star rating (across all beef breeds)
Expected progeny performance				
★★★	Calving difficulty (% 3 & 4) Breed ave: 5.33%,All breeds ave: 5.49%	+5.86%	42% (Average)	★★★☆☆
★★★★★★	Docility (1-5 scale) Breed ave: -0.06,All breeds ave: 0	0.07 scale	45% (Average)	★★★★★★
★	Carcass weight (kg) Breed ave: 18.61kg,All breeds ave: 18.25kg	+11.5kg	35% (Low)	★★☆☆
★★★	Carcass conformation (1-15 scale) Breed ave: 1.79,All breeds ave: 1.57	+1.7 scale	29% (Low)	★★★★☆☆

Expected daughter breeding performance				
★★★☆☆	Daughter calving diff (% 3 & 4) Breed ave: 5.9%,All breeds ave: 6.36%	+6.52%	28% (Low)	★★★☆☆
★★★★★★	Daughter Milk (kg) Breed ave: -0.31kg,All breeds ave: 0.47kg	+4.4kg	25% (Low)	★★★★☆☆
★	Daughter calving interval (days) Breed ave: 1.27days,All breeds ave: -0.2days	+2.89days	18% (V Low)	★☆☆☆☆

Additional Information:

Linear composites	Value	Reliability
Muscle	106	53%
Skeletal	108	53%
Function	110	24%

Herd data quality index

N/A

Animal scored. Linear scores and weaning weights in evaluations

Lot 28 Ruan Glen

ID: IE131059140544

Breed: Limousin

Sex: Male

DOB: 08-Oct-2011

Owner: Sean Lyons - Ardron Ruan Co Clare

Breeder:

Sire: Honeylodge Admiral
IE121254470155

Ronick Hawk

Broadmeadows Cannon

Ronick Esther

Aheybridge Joan

Brownhill Harry

Poulnasherry Eimear

Dam: Ruan Alanna
IE131059170373

Ardlea S236

Ideal 23

Elite Phillipa Et

Drumkilroosk
Jessica

Pelletstown Cadet

Drumkilroosk Gwen

Star Rating (Within Limousin breed)	Economic Indexes	€uro value per progeny	Index Reliability	Star rating (across all beef breeds)
★★★	Maternal	€75	30% (Low)	★★★☆☆
★	Terminal	€64	34% (Low)	★★★☆☆
	Dairy Beef			

Star Rating (Within Limousin breed)	Key profit traits	Index Value	Trait Reliability	Star rating (across all beef breeds)
Expected progeny performance				
★	Calving difficulty (% 3 & 4) Breed ave: 5.33%,All breeds ave: 5.49%	+8.06%	41% (Average)	★★☆☆
★★★★★	Docility (1-5 scale) Breed ave: -0.06,All breeds ave: 0	-0.03 scale	45% (Average)	★★★☆☆
★★★☆☆	Carcass weight (kg) Breed ave: 18.61kg,All breeds ave: 18.25kg	+18.2kg	35% (Low)	★★★☆☆
★★★	Carcass conformation (1-15 scale) Breed ave: 1.79,All breeds ave: 1.57	+1.73 scale	29% (Low)	★★★★★

Expected daughter breeding performance				
★★★☆☆	Daughter calving diff (% 3 & 4) Breed ave: 5.9%,All breeds ave: 6.36%	+5.98%	28% (Low)	★★★★★☆☆
★★★★★	Daughter Milk (kg) Breed ave: -0.31kg,All breeds ave: 0.47kg	+4.8kg	24% (Low)	★★★★★☆☆
★★★	Daughter calving interval (days) Breed ave: 1.27days,All breeds ave: -0.2days	+1.94days	18% (V Low)	★☆☆☆☆

Additional Information:

Linear composites	Value	Reliability
Muscle	104	53%
Skeletal	115	52%
Function	108	23%

Herd data quality index

N/A

Animal scored. Linear scores and weaning weights in evaluations

Lot 29 Ruan Gay

ID: IE131059150545

Breed: Limousin

Sex: Male

DOB: 08-Oct-2011

Owner: Sean Lyons - Ardron Ruan Co Clare

Breeder:

Sire: Roundhill Botan 983 (Et)
RBU

Otan

Insecte

Jade

Roundhill Sorcha Et

Geant

Dalida

Dam: Ruan Collette
IE131059130428

Honeylodge
Admiral

Ronick Hawk

Aheybridge Joan

Ruan Kathy

Grange Balerno

Moneypoint Hilda

Star Rating (Within Limousin breed)	Economic Indexes	€uro value per progeny	Index Reliability	Star rating (across all beef breeds)
★★★★☆	Maternal	€112	31% (Low)	★★★★☆
★★	Terminal	€83	37% (Low)	★★★★☆
	Dairy Beef			

Star Rating (Within Limousin breed)	Key profit traits	Index Value	Trait Reliability	Star rating (across all beef breeds)
Expected progeny performance				
★★☆	Calving difficulty (% 3 & 4) Breed ave: 5.33%,All breeds ave: 5.49%	+6.36%	41% (Average)	★★
★★★★★	Docility (1-5 scale) Breed ave: -0.06,All breeds ave: 0	-0.01 scale	46% (Average)	★★★★☆
★★★★★	Carcass weight (kg) Breed ave: 18.61kg,All breeds ave: 18.25kg	+22kg	39% (Low)	★★★★☆
★	Carcass conformation (1-15 scale) Breed ave: 1.79,All breeds ave: 1.57	+1.59 scale	34% (Low)	★★★★

Expected daughter breeding performance				
★★	Daughter calving diff (% 3 & 4) Breed ave: 5.9%,All breeds ave: 6.36%	+6.24%	28% (Low)	★★★★
★★★★★	Daughter Milk (kg) Breed ave: -0.31kg,All breeds ave: 0.47kg	+4.2kg	20% (Low)	★★★★☆
★★★☆☆	Daughter calving interval (days) Breed ave: 1.27days,All breeds ave: -0.2days	+1.47days	18% (V Low)	★★☆

Additional Information:

Linear composites	Value	Reliability
Muscle	109	54%
Skeletal	122	53%
Function	95	26%

Herd data quality index

N/A

Animal scored. Linear scores and weaning weights in evaluations

Lot 30 Ruan Goa

ID: IE131059130551

Breed: Limousin

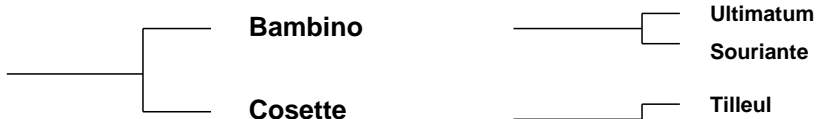
Sex: Male

DOB: 06-Nov-2011

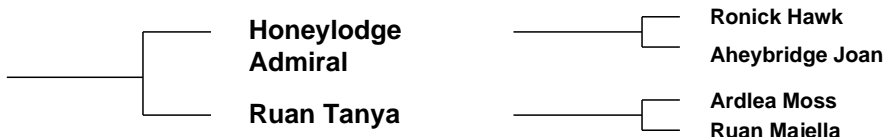
Owner: Sean Lyons - Ardron Ruan Co Clare

Breeder:

Sire: Mas Du Clo
MUC



Dam: Ruan Cindy
IE131059160439



Star Rating (Within Limousin breed)	Economic Indexes	€uro value per progeny	Index Reliability	Star rating (across all beef breeds)
★★★	Maternal	€67	35% (Low)	★★
★★★	Terminal	€82	38% (Low)	★★★★★
	Dairy Beef			

Star Rating (Within Limousin breed)	Key profit traits	Index Value	Trait Reliability	Star rating (across all beef breeds)
Expected progeny performance				
★	Calving difficulty (% 3 & 4) Breed ave: 5.33%,All breeds ave: 5.49%	+8.57%	42% (Average)	★
★★★	Docility (1-5 scale) Breed ave: -0.06,All breeds ave: 0	-0.1 scale	47% (Average)	★
★★★★★★	Carcass weight (kg) Breed ave: 18.61kg,All breeds ave: 18.25kg	+24.7kg	39% (Low)	★★★★★★
★★★★★★	Carcass conformation (1-15 scale) Breed ave: 1.79,All breeds ave: 1.57	+2.05 scale	34% (Low)	★★★★★★

Expected daughter breeding performance				
★★★★★	Daughter calving diff (% 3 & 4) Breed ave: 5.9%,All breeds ave: 6.36%	+5.53%	34% (Low)	★★★★★
★★★★★	Daughter Milk (kg) Breed ave: -0.31kg,All breeds ave: 0.47kg	+2.6kg	33% (Low)	★★★★★
★	Daughter calving interval (days) Breed ave: 1.27days,All breeds ave: -0.2days	+3.47days	27% (Low)	★

Additional Information:

Bull suitable for pedigree breeding.

Linear composites	Value	Reliability
Muscle	126	49%
Skeletal	124	49%
Function	110	40%

Herd data quality index

N/A

Animal scored. Linear scores and weaning weights in evaluations

Lot 31 Ruan Garland

ID: IE131059140552

Breed: Limousin

Sex: Male

DOB: 06-Nov-2011

Owner: Sean Lyons - Ardron Ruan Co Clare

Breeder:

Sire: Honeylodge Admiral
IE121254470155

Ronick Hawk

Broadmeadows Cannon

Ronick Esther

Aheybridge Joan

Brownhill Harry

Poulnasherry Eimear

Dam: Ruan Roisin
IE131059140214

Moustic

Eclair

Blaise

Pelletstown
Infernale

Pelletstown Buccaneer

F007 Belle De Nuit

Star Rating (Within Limousin breed)	Economic Indexes	€uro value per progeny	Index Reliability	Star rating (across all beef breeds)
★★★	Maternal	€71	32% (Low)	★★★
★	Terminal	€59	36% (Low)	★★★
	Dairy Beef			

Star Rating (Within Limousin breed)	Key profit traits	Index Value	Trait Reliability	Star rating (across all beef breeds)
Expected progeny performance				
★	Calving difficulty (% 3 & 4) Breed ave: 5.33%,All breeds ave: 5.49%	+6.77%	43% (Average)	★★★
★	Docility (1-5 scale) Breed ave: -0.06,All breeds ave: 0	-0.15 scale	46% (Average)	★★
★	Carcass weight (kg) Breed ave: 18.61kg,All breeds ave: 18.25kg	+13.4kg	37% (Low)	★★★
★★★	Carcass conformation (1-15 scale) Breed ave: 1.79,All breeds ave: 1.57	+1.74 scale	31% (Low)	★★★★★

Expected daughter breeding performance				
★★★★★	Daughter calving diff (% 3 & 4) Breed ave: 5.9%,All breeds ave: 6.36%	+5.62%	30% (Low)	★★★★★
★★★★★	Daughter Milk (kg) Breed ave: -0.31kg,All breeds ave: 0.47kg	+4.7kg	30% (Low)	★★★★★
★★★★★	Daughter calving interval (days) Breed ave: 1.27days,All breeds ave: -0.2days	+0.01days	21% (Low)	★★★★★

Additional Information:

Linear composites	Value	Reliability
Muscle	101	49%
Skeletal	104	49%
Function	108	33%

Herd data quality index

N/A

Animal scored. Linear scores and weaning weights in evaluations

Lot 32 Ruan Gusto

ID: IE131059150553

Breed: Limousin

Sex: Male

DOB: 07-Nov-2011

Owner: Sean Lyons - Ardron Ruan Co Clare

Breeder:

Sire: Honeylodge Admiral
IE121254470155

Ronick Hawk

Broadmeadows Cannon

Ronick Esther

Aheybridge Joan

Brownhill Harry

Poulnasherry Eimear

Dam: Ruan Teresa
IE131059130295

Ardlea Moss

Justicier

F004 Joconde

Ruan Rena

Ibis

Ardlea Kerstin

Star Rating (Within Limousin breed)	Economic Indexes	€uro value per progeny	Index Reliability	Star rating (across all beef breeds)
★	Maternal	€52	31% (Low)	★★★
★	Terminal	€60	35% (Low)	★★★
	Dairy Beef			

Star Rating (Within Limousin breed)	Key profit traits	Index Value	Trait Reliability	Star rating (across all beef breeds)
Expected progeny performance				
★	Calving difficulty (% 3 & 4) Breed ave: 5.33%,All breeds ave: 5.49%	+8.23%	42% (Average)	★
★	Docility (1-5 scale) Breed ave: -0.06,All breeds ave: 0	-0.22 scale	46% (Average)	★
★★★★	Carcass weight (kg) Breed ave: 18.61kg,All breeds ave: 18.25kg	+18kg	36% (Low)	★★★★★
★★	Carcass conformation (1-15 scale) Breed ave: 1.79,All breeds ave: 1.57	+1.72 scale	30% (Low)	★★★★★

Expected daughter breeding performance				
★★★★★	Daughter calving diff (% 3 & 4) Breed ave: 5.9%,All breeds ave: 6.36%	+5.23%	29% (Low)	★★★★★
★★★★★	Daughter Milk (kg) Breed ave: -0.31kg,All breeds ave: 0.47kg	+2kg	30% (Low)	★★★★
★★★	Daughter calving interval (days) Breed ave: 1.27days,All breeds ave: -0.2days	+1.14days	19% (V Low)	★★

Additional Information:

Linear composites	Value	Reliability
Muscle	108	49%
Skeletal	119	49%
Function	104	33%

Herd data quality index

N/A

Animal scored. Linear scores and weaning weights in evaluations

Lot 33 Ruan Grange

ID: IE131059160554

Breed: Limousin

Sex: Male

DOB: 09-Nov-2011

Owner: Sean Lyons - Ardron Ruan Co Clare

Breeder:

Sire: Honeylodge Admiral
IE121254470155

Ronick Hawk

Broadmeadows Cannon

Ronick Esther

Aheybridge Joan

Brownhill Harry

Poulnasherry Eimear

Dam: Ruan Rosaleen
IE131059180226

Ferry

As De Pic

Verveine

Bremore Icon

Luttrelstown Ferdie

Glenkeen Eve

Star Rating (Within Limousin breed)	Economic Indexes	€uro value per progeny	Index Reliability	Star rating (across all beef breeds)
★★★	Maternal	€68	33% (Low)	★★★
★	Terminal	€61	36% (Low)	★★★
	Dairy Beef			

Star Rating (Within Limousin breed)	Key profit traits	Index Value	Trait Reliability	Star rating (across all beef breeds)
Expected progeny performance				
★★★	Calving difficulty (% 3 & 4) Breed ave: 5.33%,All breeds ave: 5.49%	+6.2%	43% (Average)	★★★
★★★★★	Docility (1-5 scale) Breed ave: -0.06,All breeds ave: 0	-0.02 scale	47% (Average)	★★★☆☆
★	Carcass weight (kg) Breed ave: 18.61kg,All breeds ave: 18.25kg	+12.2kg	38% (Low)	★★★
★	Carcass conformation (1-15 scale) Breed ave: 1.79,All breeds ave: 1.57	+1.62 scale	32% (Low)	★★★★

Expected daughter breeding performance				
★★★	Daughter calving diff (% 3 & 4) Breed ave: 5.9%,All breeds ave: 6.36%	+6.5%	31% (Low)	★★★☆☆
★★★★★	Daughter Milk (kg) Breed ave: -0.31kg,All breeds ave: 0.47kg	+5.6kg	30% (Low)	★★★★★
★★★☆☆	Daughter calving interval (days) Breed ave: 1.27days,All breeds ave: -0.2days	+1.55days	21% (Low)	★★★☆☆

Additional Information:

Linear composites	Value	Reliability
Muscle	99	50%
Skeletal	112	50%
Function	109	35%

Herd data quality index

N/A

Animal scored. Linear scores and weaning weights in evaluations

This page is intentionally left blank